

SIZING CHARTS

Sizing is for reference only. Actual sizing may vary by style. To get a true sense of product sizes, we encourage you to use samples, which we offer at a discounted price. And there's no extra charge for larger sizes on in-stock styles.

Tops & jackets to fit body measurements / Regular & Tall
Tall styles provide a fit that includes an additional 2" in the length of the body and the sleeves.

TRIMARK

Trimark

Unisex styles have men's standard fit. It is recommended women choose one size smaller (size down 1 size). Please refer to the sizing charts.

MEN'S/UNISEXTOPSANDJACKETS	XS	S	M	L	XL	2XL	3XL	4XL	5XL
Neck (inches)	13-13.5	14-14.5	15-15.5	16-16.5	17-17.5	17.5-18	18.5-19	19.5-20	20.5-21
Chest (inches)	33-35	35-38	39-41	42-44	45-48	49-52	53-56	57-60	61-64
Sleeve Length (inches)	32	33-33.5	34-34.5	35-35.5	36-36.5	37-37.5	38-38.5	38.5-39	39-39.5
Sleeve Length Tall (inches)				37-37.5	38-38.5	39-39.5	40-40.5	40.5-41	41-41.5

MEN'S BOTTOMS	XS	S	M	L	XL	2XL	3XL	4XL	5XL
Waist (inches)	28-29	30-31	32-33	34-35	36-37	38-39	40-41	42-43	44-45
Hip (inches)	34-36	36-38	38-40	40-42	42-44	44-46	46-48	48-50	50-52
Inseam (inches)	31.5	31.5	31.5	31.5	31.5	31.5	31.5		

WOMEN'S TOPS AND JACKETS	XS	S	M	L	XL	2XL	3XL
Sizing Reference	2-4	6-8	10-12	14-16	18	20	22+
Chest (inches)	30-32	33-35	36-38	39-41	42-44	45-47	48-50
Sleeve Length (inches)	29.5-30	30.5-31	31-31.5	32-32.5	32.5-33	33-33.5	33.5-34

WOMEN'S BOTTOMS	XS	S	M	L	XL	2XL	3XL
Sizing Reference	2-4	6-8	10-12	14-16	18	20	22+
Waist (inches)	24-26	26.5-28.5	29-30	31.5-33.5	34-36	36.5-38.5	39-40.5
Hip (inches)	33-35	35.5-37.5	38-40	40.5-42	43-45	45.5-47.5	48-50
Inseam (inches)	31	31	31	31	31	31	31

Roots 73™ *Tops & jackets to fit body measurements*



MEN'S TOPS	XS	S	M	L	XL	2XL	3XL	4XL	5XL
To Fit Chest	33 - 35	35.5 - 37	38 - 40	41 - 43	44 - 46	47 - 49	50 - 52	53 - 55	56 - 58
To Fit Sleeve Length	31 - 32	32 - 33	33 - 34	34 - 35	35 - 36	36 - 36.75	36.75 - 37.5	37.5 - 38.25	38.25 - 39
Neck Circumference	15	15 - 15.5	15.5 - 16	16 - 16.5	17 - 17.5	18 - 18.5	18.5 - 19	19 - 19.5	19.5 - 20

MEN'S BOTTOMS	S	M	L	XL	2XL	3XL
Waist	31 - 32	33 - 34	35 - 37	38 - 40	41 - 43	44 - 46
Hip	35 - 36	36 - 37	38 - 39	43.5 - 45	46.5 - 48	49
Inseam-Regular	31	31	31	31	31	31

WOMEN'S TOPS	XS	S	M	L	XL	2XL	3XL
To Fit Chest	32 - 33	34 - 35	36 - 37	38.5 - 40	41.5 - 43	44.5 - 46	48
To Fit Sleeve Length	31.75	32.375	33	33.75	34.5	35.25	36

WOMEN'S BOTTOMS	XS	S	M	L	XL	2XL
SIZE EQUIVALENT	2	4 - 6	8 - 10	12 - 14	16 - 18	20
Waist	24 - 25	26 - 27	28 - 29	30.5 - 32	33.5 - 35	36.5
Hip	34 - 35	36 - 37	38 - 39	40.5 - 42	43.5 - 45	46.5

Roots 73™ is a trademark of Roots Corporation used under license.

Wellable™



Unisex Robe	S/M	L/XL
Women Numeric Size Equivalent	4-12	12-20
Men Size Equivalent	XXS-L	L-3XL
Chest (inches)	34-46	44-56

UNTUCKit



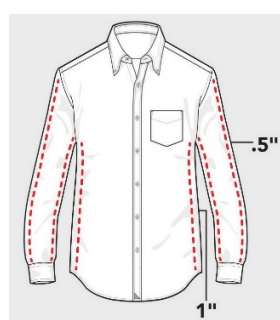
MEN'S *	S	M	L	XL	2XL	3XL
Chest (inches)	35-37	38-40	41-43	44-45	46-47	48-50
Sleeve Length (inches)	32.5-33.5	33.5-34.5	34.5-35.5	35.5-36.5	36-37	36-37
Neck (inches)	14-14.5	15-15.5	16-16.5	17-17.5	18-18.5	18-18.5

WOMEN'S *	XS	S	M	L	XL	2XL
Numeric Sizing	0	4	8	12	16	18
Bust (inches)	32.5-33.5	34.5-35.5	36.5-37.5	39-40.5	42-43.5	47
Natural Waist (inches)	25-26	27-28	29-30	31.5-33	34.5-36	36.5



Regular Fit

Our classic cut with the perfect untucked length. Runs slightly smaller than traditional shirts.



Slim Fit

One inch less fabric in the body and one half inch less in the sleeve compared to regular fit.

† UNTUCKit Men's shirts run smaller than traditional brands. If you're between size, please order one size up. Women's shirts run true to size.

STITCH®

MEN'S (inches)	S	M	L	XL	2XL	3XL	4XL
Chest	36-38	40-42	44-46	47-49	49-52	53-55	56-58
Waist	30-32	32-34	36-38	38-40	42-44	45-47	48-50
Neck	14.5-15	15.5-16	16.5-17	17.5-18	18.5-19	19.5-20	20.5-21
Sleeve length	32-33	33-34	34-35	35-36	36-37	37-38	38-39

WOMEN'S (inches)	XS	S	M	L	XL	2XL
Chest	32.5-33.5	34.5-35.5	36.5-37.5	39-40.5	42-43.5	45-46.5
Waist	26-27	28-29	30-31	32-35	36-37	39-40
Hip	35-36	37-38	39-40	42-43	45-46	48-50
Numeric size	0-2	4-6	8-10	12-14	16	18

Greatness Wins

MEN'S	S	M	L	XL	2XL	3XL
Chest (inches)	35-37	38-40	41 - 43	44-45	46-47	48-52
Waist (inches)	29 - 31	31.5 - 33.5	34 - 36	36.5 - 38.5	39.5 - 41.5	43.5

WOMEN'S	XS	S	M	L	XL	2XL
Sleeve Length (inches)	30.5	31.0	31.75	32.5	33.25	33.5
Chest (inches)	33-34	35-36	37-39	39-40	40-41	41-42
Cup size	32A-B	34B-C	34C-36C	36C-38B	38B-38C	38C-38D
Waist (inches)	24-26	26-28	28 - 30	30-32	32-34	35-37
Low Hip (inches)	34-36	36-38	38-40	40-42	42-44	45-47

American Giant

MEN'S (inches)	S	M	L	XL	2XL	3XL
Chest	36-38	39-41	42-44	45-47	48-50	51-53
Waist	29-30	31-32	33-35	36-38	39-41	42-44
Hip	36-37	38-39	40-42	43-45	46-48	49-51
Sleeve length	34-34.5	34.5-35	35-35.5	35.5-36	36-36.5	36.5-37

WOMEN'S (inches)	XS	S	M	L	XL
Chest	32-33	34-35	36-37	38-39	40-41
Waist	25-26	27-28	29-30	31-32	33-34
Hip	35-36	37-38	39-40	41-42	43-44
Sleeve length	30-30.5	30.5-31	31-31.5	31.5-32	32-32.5

FootJoy Men's Shirts & Jackets Size Conversion Chart / Traditional Fit.

MEN'S (inches)	S	M	L	XL	2XL	3XL
Chest	36-38	39-41	42-44	45-47	48-50	52-55
Waist	30-31	32-33	34-35	36-37	38-39	40-41
Hip	36-38	38-40	40-42	42-44	44-46	46-48
Sleeve length	33-33.5	34-34.5	35-35.5	36-36.5	37-37.5	38-38.5

WOMEN'S (inches)	XS	S	M	L	XL	2XL
Numeric Sizing	0-2	4-6	8-10	12-14	16-18	20+
Chest	30-33	33-35	36-38	39-41	42-44	44-46
Waist	24-26	26.5-28.5	29-31	31.5-33.5	34-36	36.5-38.5
Hip	35-36	37-38	39-40	40.5-42	43.5-45	45.5-47
Sleeve length	29.5-30	30.5-31	31-31.5	32-32.5	32.5-33	33-33.5

BERNE

MEN'S TOPS	S	M	L	XL	2XL	3XL
Chest (inches)	36-38	40-42	44-46	48-50	52-54	56-58

WOMEN'S TOPS	S	M	L	XL	2XL	3XL
Chest (inches)	35-37	37.5-39.5	40-43	43.5-45.5	46-47.5	48-52
Waist (inches)	28.5-30	30.5-33	33.5-37	37.5-40	40.5-42.5	43-46
Hip (inches)	37-38.5	39-41	41.5-45	45.5-48	48.5-50	50.5-54

The sizing charts reference body measurements.

If you require garment measurements, please contact customer service.

Chest

Under the arms and across the shoulder blades with a firm and level tape.

Hip

When standing, measure around the widest part of the hip.

Sleeve length

Relax arm, and measure from the centre of the back of the neck, over the shoulder and down to the outer wrist.

Waist

Measure around your natural waistline, while in your underwear. Keep one finger between the tape and your body for an accurate fit.

Inseam

Select a pair of your best-fitting pants of a similar material. Measure from the crotch to the bottom. The number of inches, to the nearest half-inch, is the inseam length.

